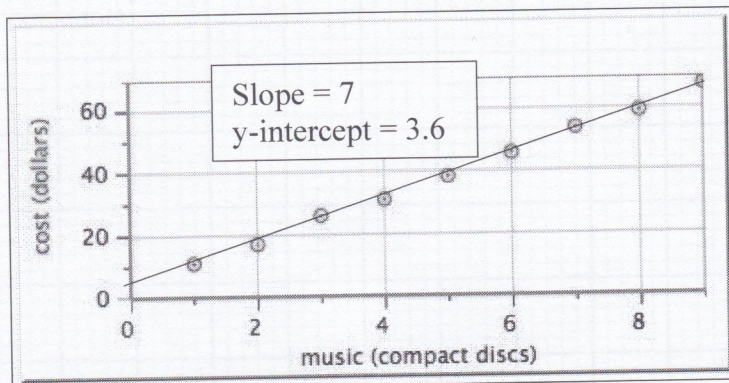


## Worksheet 3: Graphical Analysis

1. A friend prepares to place an online order for CD's.

a. What are the units for the slope of this graph?

b. What does the slope of the graph tell you in this situation?



c. Write an equation that describes the graph.

d. Provide an interpretation for what the y-intercept could mean in this situation.

2. The following times were measured for spheres of different masses to be pushed a distance of 1.5 meters by a stream:

Mass (kg)	Time (s)
5	10.2
10	17.3
15	23.8
20	31.0

a. Graph the data by hand on the grid provided and write a mathematical model for the graph that describes the data.

b. Write a clear sentence that describes the relationship between mass and time.